



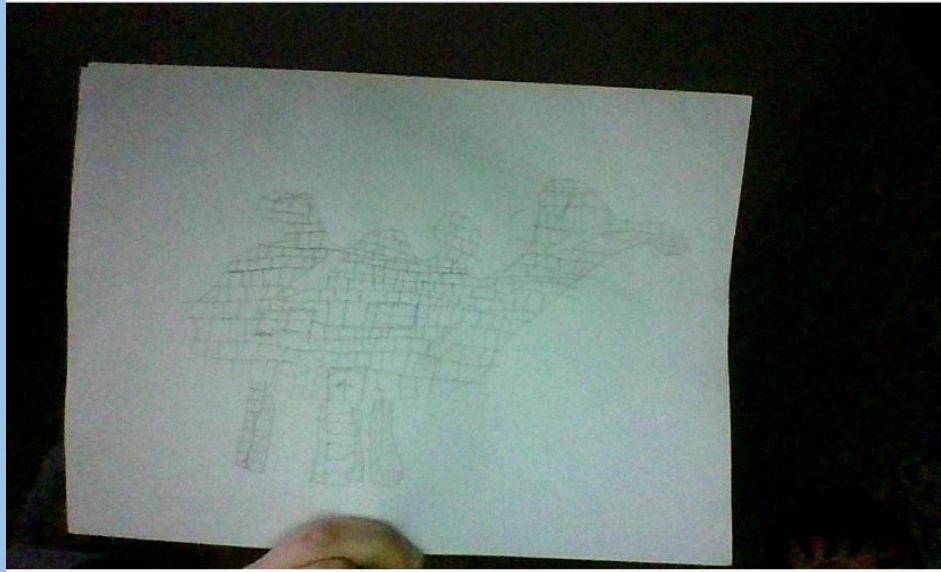
W/C 8.2.21 Seesaw Highlights.

Class 4

Art

Ryan and Keira have produced some really great work based on architects Zaha Hadid.

Design inspired by Zaha Hadid.



Ryan




Keira


History

Jack has created a brilliant Stone Age animal fact file this week.
Great work Jack!

Glyptodon



was a large heavily armored mammal.



lived in Pleistocene epoch where

Glyptodon originated in South America. Their remains have been found in Brazil, Uruguay, and Argentina. Of the *Glyptodon* species attributed to remains discovered in Brazil,

size

Glyptodon measured 3.3 metres (11 ft) in length, 1.5 metres (4.9 ft) in height and weighed up to 2 tonnes (4,400 lb).

eat The feeding habits of *Glyptodon*, based on their jaw morphology, were herbivorous. *Glyptodon* grazed near water sources such as rivers and lakes.

closest living relative: armadillos.

Extinction

Some evidence suggests that humans drove glyptodonts to extinction.^[30] Hunters may have used the shells of dead animals as shelters in inclement weather.

Maths

Joshua D worked hard to solve some problems with subtraction. He was able to find the missing numbers and work out what had gone wrong in an equation.

Part B -

1. What could the missing numbers here be?
2. Check this answer

		9	2	7	
	-	<u>4</u>	<u>1</u>	<u>9</u>	
		5	1	8	

$$\begin{array}{r} \square \overset{3}{4} \overset{1}{\square} \\ - 2 \square 6 \\ \hline 5 \ 0 \ \square \end{array}$$

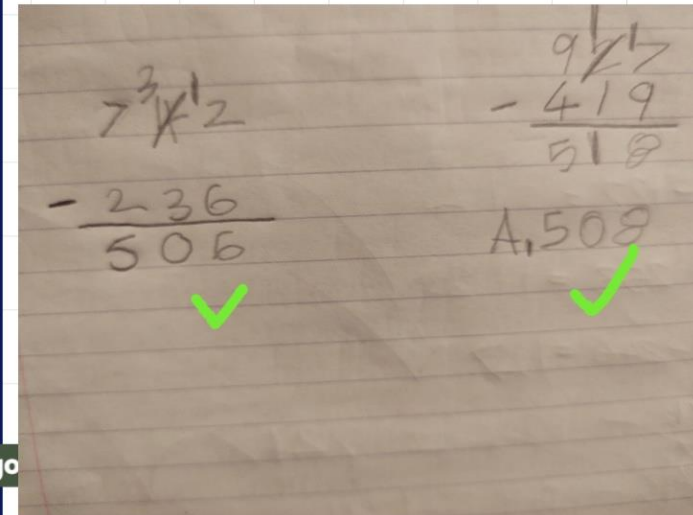


More information here.

Now go

1. $742 - 236 = 506$

2. No, it is not correct. The answer should be 508.



Literacy

Joshua has used some excellent imperative to describe how to wash a Woolly Mammoth!

You will need:

**A river,
Shampoo,
A hairbrush,
A cloth,
A bucket and
an obedient
Mammoth.**

**Bathe his feet in hot, soapy water.
Rub his stomach with a soaking cloth.
Scour his feet with a hairy brush.
Soak his tail in river water.
Wash his back in a sweeping motion.
Scrub his wool until it is messy.
Pour the water over his face.
Lather his head until it is covered with bubbles.
Cleanse his buttocks carefully.
Sanitize his trunk with shampoo.
Rinse the shampoo out thoroughly.
Clean his whole body (this may take some time !).
Buff his teeth with a sponge on a stick.
Polish his tusks to a mirror shine.
Deodorise his thick fur with herbs.**

Science

Some super diagrams of circuits completed in class this week by Zach .

Science

Material	Does the bulb light up?	Is it electrical conductor or an insulator?
plastic ruler	no	insulator
metal Fork	yes	conductor
Fabric	no	insulator
Silver con.	yes	conductor
copper con.	yes	conductor
paper	no	insulator
wooden pencil	no	insulator
metal screw	yes	conductor
cardboard	no	insulator

✓

Great diagram Zach. ✓

✓ why do wires have a plastic coating?
1 To stop the wires getting damage
2 To stop the wire going onto another material.
3 To stop people getting a electric shock.

you have shown a good understanding Zach. Great job. ✓